

Queen of Salmakis



Queen of Salmakis

40 meter new brand wooden Sailing yacht Queen of Salmakis is a luxury modern designed gulet. She offers superior accommodation for 18 guests in beautifully designed two master cabins, four double guests cabins and two triple cabins (with one double bed+one single bed). She has two masts and fully equipped for sailing. She has top quality amenities and affords modern facilities on board.

Queen of Salmakis has Turkish Loyd and available for 18 guests in both Turkey and Greece.

SPECIFICATIONS

LENGTH: 39 .10M

BEAM: 8.50 M

BUILT: 2019

BUILDER : SALMAKIS YACHTING

NUMBER OF CREW: 6 (SIX)

ACCOMMODATION: AVAILABLE FOR 18 GUESTS IN 8 CABINS (2 MASTERS, 4 DOUBLE CABINS, 2 TRIPLE CABINS WITH A DOUBLE AND SINGLE BED)

BASED PORT: BODRUM

HULL CONSTRUCTION: LAMINATED

FLAG: TURKISH

LOYD: TURKISH

ENGINES: 2 X VOLVO, 600 KW

GENERATORS: 2 X ONAN, 40 KW

CRUISING SPEED: 10 KNOTS

MAXIMUM SPEED: 12 KNOTS

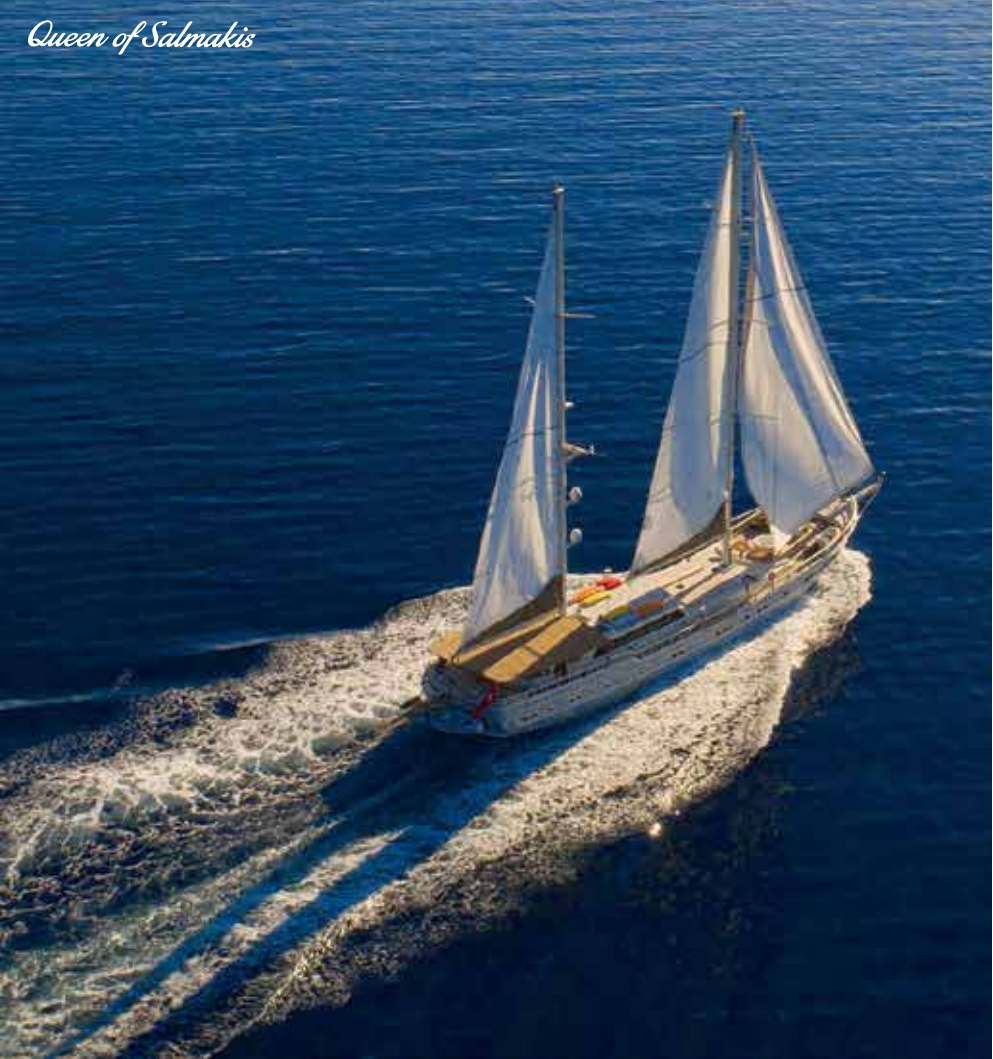
TENDERS: 1 SPEED BOAT WITH 115HP ENGINE

TOYS: WINDSURF , CANOE, WAKEBOARD, PADDLEBOARD, SNORKELLING & FISHING EQUIPMENT, WATERSKI, 1 x JETSKI (OPTIONAL)

(use of jetski is 250 €+fuel and fuel of other toys are to be paid)



Queen of Salmakis



Queen of Salmakis
FRONT DECK







Queen of Salmakis
SALOON



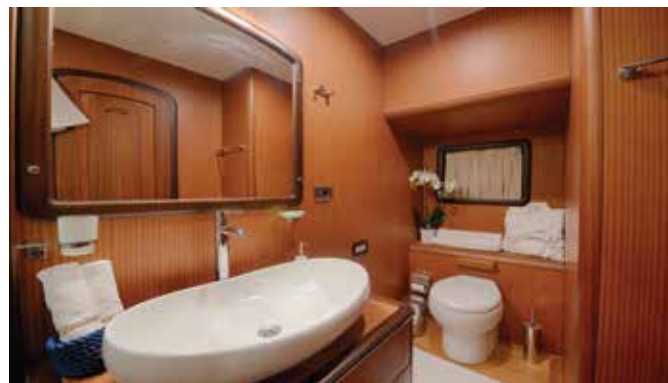
Queen of Salmakis
BOW MASTER CABIN



Queen of Salmakis
AFT MASTER CABIN



Queen of Salmakis
TRIPLE CABIN



Queen of Salmakis
DOUBLE CABIN















Queen of Salmakis